

2.0MM PIN HEADER STRAIGHT TYPE

MATERIAL

Insulator : 30% Glass fiber PBT

Contact Pin : Brass

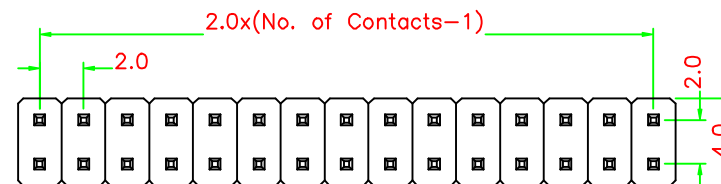
SPECIFICATION

Current Rate : 1 AMP

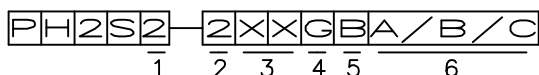
Insulation Resistance : 5000MΩ Min. at DC 500V

Contact Resistance : 20mΩ Max. at DC 100mA

Operation Temperature : -55°C to +105°C

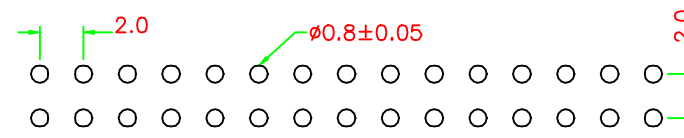
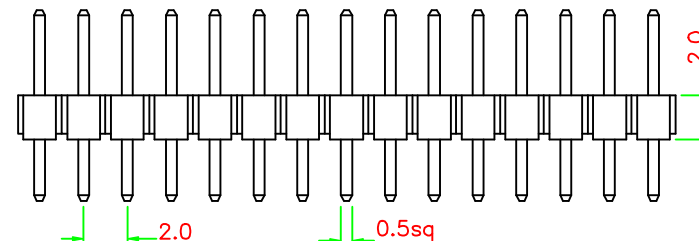
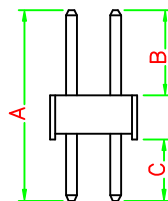


ORDER INFORMATION



1. 1: Plastic Height=1.5mm
2. 2: Plastic Height=2.0mm
2. 2: Dual rows
3. No. of contacts per row
4. G: Gold flash
T: Tin plated
5. B: Black Insulator
6. Other dimensions, please fill out A/B/C.

* Standard dimensions :
 PH2S1 : A=8.2 B=3.9 C=2.8
 PH2S2 : A=8.7 B=3.9 C=2.8



Recommended P.C.B. Layout

UNIT : mm



立河企業有限公司
 PINREX ENTERPRISE
 CO., LTD

圖名 MOLD NAME	2.0MM PIN HEADER STRAIGHT TYPE		
圖號 DRAWING NO.	PH2S2-2XXGB	比例 SCALE	3 : 1
公差 TOLERANCE	±0.2	繪圖 DRAW BY	Carrie
		日期 DATE	011217